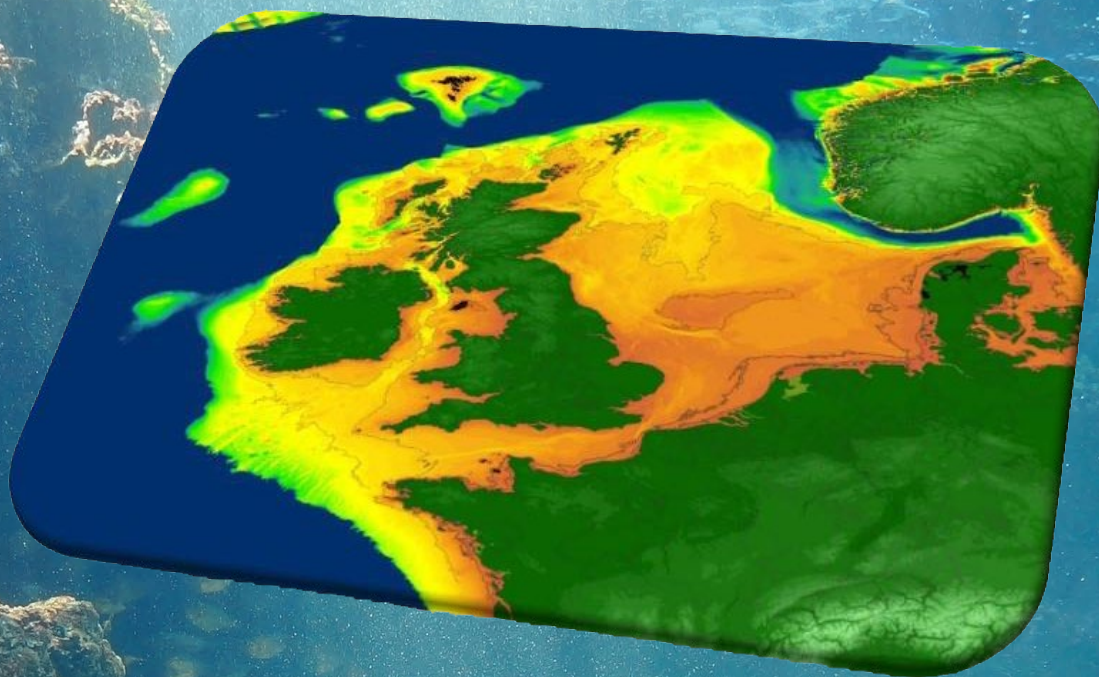


# Greetings from Doggerland: recent surveys of the inundated Mesolithic landscapes of the southern North Sea



Thursday 13<sup>th</sup> January @ 8pm

By: Prof. Vincent Gaffney

*Online Zoom talk from the Marlow Archaeology Group*

The only lands on Earth almost completely unexplored archaeologically are those lost to the oceans. Global warming led to vast inundated areas once peopled by thousands. These lost lands hold millennia-long records of colonisation, settlement, and climate change. Recent research has mapped over 85,000km<sup>2</sup> of inundated Holocene European landscapes, with rivers, lakes, hills, and coastline. Undertaken as part of the "Europe's Lost Frontiers" project, this is transforming our understanding of this critical historical period.



[www.marlowarch.co.uk](http://www.marlowarch.co.uk)

Free to Marlow Archaeology Group (MAG) members  
£3.00 for non-members

Book on [www.marlowarch.co.uk/booking](http://www.marlowarch.co.uk/booking) or via QR code  
ENQUIRIES [info@marlowarch.co.uk](mailto:info@marlowarch.co.uk)



Hunt's of Marlow and Burgers Artisan Bakery sponsor MAG